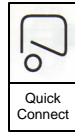


5039/B

Line Voltage Halogen Socket
 Rated: 2A, 250V, T250°C
 GZ10 Base
 Screw Terminals
 Fixing by M3 screws
 Color: White
 Use with 5039/GVN Cap



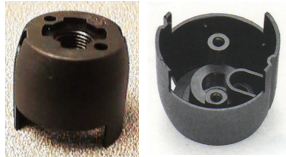
5031/B

Low Voltage (MR16) Halogen Socket
 Quick Connect Push in Terminals
 For bases G4, GX5.3, G6.35, GY6.35
 8A 24V Socket Temp = 250°C
 Fixing holes 3.3 mm
 Also available with Wire Leads:
5031/15/S (6" Silicon wire leads)
5031/15/TP (6" Teflon PTFE wire leads)



H82

Halogen Porcelain Socket
 with 6" 200°C SFG wire leads
 G5.3 and G6.35 bases
 Socket Rated: 125V 75W
 UL Recognized



5039/GVN

Cap with Threaded
 M10 (1/8 IPS) Plastic Entry
 with locking screw
 Color: Black
 Use with 5039/B Socket



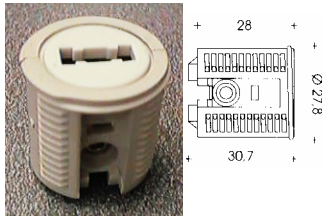
B36/12" (with 12" leads)
B36/36" (with 36" leads)

Low Voltage Halogen
 Porcelain Socket
 with 1/8 IPS Hickey and
 with 200°C SFG wire leads
 G4, G5.3 and G6.35
 Universal Bi-pin bases
 Socket Rated: 100W 250V
 UL Recognized



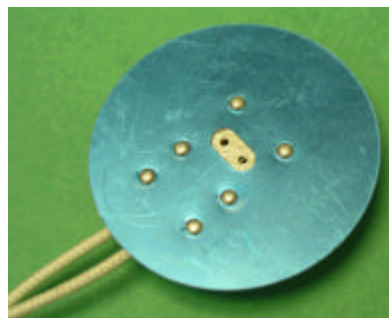
H-85/G8/12"

Round Porcelain Halogen G8.0
 Lampholder with 12" leads
 200°C white wire leads
without Mounting Bracket
 Rating: 1000W — 250V
 Approval: cUL[®] us E143571



5040/B

Line Voltage Halogen Socket
 Push in terminals
 (Quick Connect)
 G9 Base, 0.5A, 250V, 250°C
 Color: White
 Use with Clip-in Cap
 391/GVS/T/B shown below



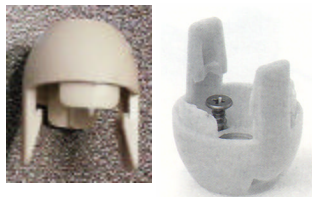
F53/51 (with 6" leads)
F53/51/12" (with 12" leads)

G5.3 base Halogen Porcelain Socket
 with 51 mm Shield and
 with 200°C SFG wire leads
 Socket Rated: 100W 250V
 UL Recognized



H-83/G8/12"

Porcelain Halogen G8.0
 Lampholder with 12" leads
 200°C white wire leads
 Rating: 1000W — 250V
 Approval: cUL[®] us E143571



391/GVS/T/B

Clip-in Cap with M10 (1/8 IPS)
 Threaded plastic entry
 With locking screw
 Color: White
 Use with 5040/B Socket